

Govt. of India
Ministry of Human Resource Development
Dept. of School Education and Literacy
Mid Day Meal Division

PAB-MDM meeting
to consider and approve AWP&B 2018-19

(Date of the meeting: 14.06.2018)



APPRAISAL NOTE

STATE : PUNJAB

INDEX

Sl. No.	CHAPTER	Page no.
	Pre-requisite steps for submission of AWP&B	2
Part-A	General Information	3-5
Part-B	Review of performance during 2016-17	6-
Part-C	Recommendations of Appraisal team and quantification of variables for central assistance during 2017-18.	
Part-D	Fact sheet.	

Status on Pre requisite steps required for submission of AWP&B

Pre-requisite step	Status
Plan should be approved by SSMC Meeting	Yes
100% payment of honorarium shall be made to cook cum helpers up to March, 2018	Yes
100% payment of cost of food grains shall be made to FCI up to 31st March, 2018.	Yes
Separate and detailed MME plan.	No
Bank account should be opened for cook cum helpers	Yes
Plan should also be submitted through MDM-MIS	Yes
Annual and Monthly data entry for the FY 2017-18 should be completed up to March, 2018.	Yes
ATN on commitments given by the State Govt. during PAB Meeting of 2017-18.	Yes
ATN on findings of JRM reports	NA,
Plan should be submitted within the scheduled date in hard and soft copies both.	Yes

Issues

- i) State did not participate in the appraisal.
- ii) 73% coverage against enrolment both in Primary and Upper Primary..
- iii) Delay in the construction of kitchen-cum-stores
- iv) Data of kitchen-cum-stores needs reconciliation.
- v) Honorarium paid in Cash (Bikaner) and by cheque (Bhilwara, Bundi and Karauli).
- vi) 18 sample out of 74 found below norms.
- vii) 7% schools uploading daily data in AMS.

Best Practices

- i) Additional Contribution (Rs.200 per month per CCH) in the honorarium to Cook-cum-Helpers.
- ii) Seasonal Fruits provided once a week.
- iii) 344 meetings of District Level Steering-cum-Monitoring Committee meeting against 396 mandated meetings.
- iv) Excess coverage against PAB approval (102% in Primary and 101% in Upper Primary.
- v) LPG in 97 % schools.

Part-A : General Information

The Mid-Day-Meal-Scheme (MDMS) is under implementation in the State of Rajasthan under the administrative control of the School Education Department, Government of Rajasthan (GoR). The mid-day-meal-Commissionerate at the State level is responsible for effective implementation and monitoring of the MDMS in the State of Rajasthan.

Mid-Day-Meal (MDM) is provided to all students of Class I to VIII studying in 68685 Government schools, Government of India(GoI)-aided schools, Special Training Centers (STC) {EGS and AIE centers, national child labour projects (NCLP) centers} and minority based institutions (Madarsas&Maqtabas). The state wise numbers of these schools and centers covered under the mid-day-meal-meal-scheme (MDMS) is as under;

Govt.+ Local Body	Govt. Aided	STC Centers	Madarsas	Total
64376	0	479	1651	66506

The State Government of Rajasthan started providing cooked meal to the children in schools under the mid-day-meal-program from July 2002. With this beginning, the State Government of Rajasthan provided all the resources, physical as well as financial from its own State Budgetary resources. The state government started with allocation of Rs. 00.50 per student per day (per meal) as the “cooking-conversion-charges” since July 2002 itself. The content of the cooked mid-day-meal served to the school students in the beginning was ghooghri/dalia etc.

Subsequently, from January 2005 onwards, the cooking- conversion- cost was enhanced to Rs. 1.50 per student per day (per meal) (central share Rs. 1.00 & State share Rs. 0.50) from the initial cost of Rs.00.50 per student per day. With this enhancement some new recipes such as Dal-Bati, Dal-Roti, Roti-Sabji, sweet/ namkeen Rice, Khichdi, Dalia, Pulav etc. were also introduced to the mid-day-meal-menu in the state of Rajasthan.

Further enhancement in the cooking-conversion-cost was made effective from March 2006 and it was again increased to Rs. 2.00 per student per day (per meal) (central share Rs. 1.50 & State share Rs. 0.50) for the primary students.

In October 2007, the state government started implementing Mid- Day- Meal-Scheme (MDMS) for the students in classes from VI to VIII in educationally backward blocks of Rajasthan. In the same year, the MDMS was made effective and began implementation in all the blocks of Rajasthan state with the enhancement in cooking-conversion-cost of Rs. 2.50 per student (central share Rs. 2.00 & State share Rs. 0.50) for upper primary students.

Further in the year 2008 the Government of India (GOI) also enhanced its central-share of funding by 4% and with this increase the cooking-conversion-cost was supported with central share of Rs. 2.08 for primary students (central share Rs. 1.58 & State share Rs. 0.50) and Rs. 2.60 for upper primary (central share Rs. 2.10 & State share Rs. 0.50) students in the state. In the year 2008, itself the mid-day-meal-menu in Rajasthan also included with a provision to provide seasonal fruits once a week along with cooked Mid-Day-Meal (MDM).

The Government of India (GOI) introduced a yearly cooking-conversion-cost revision and enhancement system in the year 2009-10. Since then the GOI and GOR has been increasing this cooking-conversion-cost every year (financial year) @ 7.5% per year. The GOI-guidelines of MDM now prescribe with a cost sharing system between the Government of India (GOI) and Government of Rajasthan (state) (GOR). This cost sharing system runs with a ratio of 75%:25% respectively up to year 2015-16. From 2016-17, the New Cost Sharing ratio between Government of India (GOI) and Government of Rajasthan (state) (GOR) 60%:40% respectively.

The Mid-Day-Meal-Scheme seeks to address the most urging problems for the children in India, namely, hunger and education, by:

- i. Enhancement in nutritional status of school going children-Improving the nutritional status of children in class I to VIII in all Government schools, Government of India(GOI)-aided schools, Special Training Centers (STC) {EGS and AIE centers, national child labor projects (NCLP) centers} and minority based institutions (Madarsas&Maqtab).
- ii. Encourage enrollment and regularity in attendance-encouraging poor children, belonging to disadvantaged sections, to attend school more regularly and help them to concentrate on classroom activities, hereby, foster enrollment, increase retention and decrease drop outs.
- iii. Promoting harmony among children
- iv. Providing nutritional support to children in drought affected areas during summer vacations

1. Basic Information:

(Year 2017-18)

S. No.	INDICATORS	STATUS		
		PRY	U PRY	TOTAL
1. No. of Institutions		PRY	U PRY	TOTAL
i)	Approved by MDM-PAB for 2017-18	32282	34224	66506
ii)	Covered during the year	32282	34224	66506
2. No. of Children				
i)	Approved by MDM-PAB	2857473	1604619	4462092
ii)	Enrollment as on 30.9.2017	4000312	2222301	6222613
ii)	Average No. of children availed MDM during 01.04.2017 to 31.03.2018*	2906446	1618139	4524585
3. Coverage of children as per Quarterly Progress Report (QPR)				
i)	Average no. of children availed MDM as per QPR-1	2859962	1595441	4455403
ii)	Average no. of children availed MDM as per QPR-2	2897945	1601106	4499051
iii)	Average no. of children availed MDM as per QPR-3	2909486	1623052	4532528
iv)	Average no. of children availed MDM as per QPR-4	2945860	1651684	4597544
4. No. of Working Days				
i)	Approved for 2017-18	232	232	
ii)	Covered during 2017-18	232	232	
5. Per unit cooking cost Per child per day (in Rs.)				
AVERAGE UNIT COOKING COST PCPD		4.13	6.18	
State's contributions in cooking cost per		1.65	2.47	

child per day			
---------------	--	--	--

**percentage to enrolment*

The minimum mandatory State Share is Rs. 1.65 and Rs. 2.47 per child per day for primary and upper primary respectively.

Part-B : Review of Performance in 2017-18 (01.04.17 to 31.03.2018)

2. Based on the information provided by the State Government in its AWP&B 2017-18, the performance during 2017-18 (01.04.17 to 31 03.2018) was reviewed. The major issues in implementation during 2017-18 are summarized as under: -

2.0 Coverage of Institutions

Coverage in terms of No. of institutions.

Difference between PAB Approval (Target) Vs No. of institutions covered (Achievement)

-

i) PRIMARY

The number of existing institutions = 32282
 Number of institutions covered during 01.04.17 to 31.03.18 = 32282 **(100%)**

ii) UPPER PRIMARY WITH PRIMARY CLASSES

The number of existing institutions = 990
 Number of institutions covered during 01.04.17 to 31.03.18 = 990 **(100%)**

ii) UPPER PRIMARY

The number of existing institutions = 33234
 Number of institutions covered during 01.04.17 to 31.03.18 = 33234 **(100%)**

The information reveals that all the eligible institutions in the State have been covered under MDMS.

2.1 Coverage of Children

2.1.1 Coverage against Enrolment :

a) Primary - Coverage in terms of No. of children. Difference between Enrolment vs Average No. of Children Aailed MDM (Achievement) (Refer Table 2.3 of the Analysis Sheet).

Total Enrolment as on 30.09.2017 = 4000312
 Average number of children aailed MDM during 01.04.17 to 31.03.18 = 2906446 **(73%)**

b) Upper Primary : Coverage in terms of No. of children. Difference between Enrolment vs Average No. of Children Aailed MDM (Achievement) – UPPER PRIMARY (Refer Table 2.4 of the Analysis Sheet).

Total Enrolment as on 30.09.2017 = 2222301
 Average number of children aailed MDM during 01.04.17 to 31.03.18 = 1618139 **(73%)**

2.1.2 Coverage against PAB-MDM approval :

a) Primary : Coverage in terms of No. of children. Difference between PAB Approval

**(Target) vs Average No. of Children Availing MDM (Achievement)
(Refer Table 2.5 of the Analysis Sheet).**

The number of children approved by MDM PAB for 2017-18 = 2857473

Average number of children availed MDM during 01.04.17 to 31.03.18 = 2906446(102%)

b) Upper Primary: Coverage in terms of No. of children. Difference between PAB Approval

**(Target) Vs Average No. of Children Availing MDM (Achievement
(Refer Table 2.6 of the Analysis Sheet).**

The number of children approved by MDM PAB for 2017-18 = 1604619

Average number of children availed MDM during 01.04.17 to 31.03.18 = 1618139(101%)

2.1.3 No. of Meals: Difference between No. of meal to be served (Target) Vs. No. of meals served (Achievement)- PY+U PY (Refer Table 2.7 of the Analysis Sheet).

The number of meals to be served during 01.04.17 to 31.03.18 = 10352.05 lakh

The number of meals served during 01.04.17 to 31.03.18 = 10563.45 Lakh (102%)

2.2 FOODGRAINS (PRIMARY + UPPER PRIMARY)

2.2.1 Level of Opening balance as on 01.04.17: (Refer Table 3.2 of the Analysis Sheet).

The opening balance of food grain with the State as on 01.04.2017 was 9779.34 MTs. The total allocation of food grains during 2017-18 is 126898.90 MTs. More than 10% opening balance as on 01.04.2017 was available at Bikaner (48%), Jaipur (35%), Pali, Udaipur and Kota (29% each), Sawai Madhopur and Dungarpur (27% each), Nagaur (18%), Bhilwara (17%) and Churu & Sirohi (16% each)

2.2.2 Level of unspent balance as on 31.03.18: (Refer Table 3.3 of the Analysis Sheet).

The unutilized food grain with the State as on 31.03.2018 was **5425.07** MT (4%). However some districts viz Baran, Jaisalmer and Tonk had 12%, 19% and 11% closing balance of food grain.

2.2.3 Availability of Food grains: (01.04.17 to 31.03.18) (Refer Table 3.5 of the Analysis sheet).

The State Government Lifted 112331.20 MTs of food grain from Food Corporation of India. The State had unutilized food grain of 17494.54 MTs with it at the beginning of the year. Thus the total availability of food grain with the State was 129825.73 MTs which is 102 % of annual allocation of 126898.90 MTs of food grains to the State during 2017-18.

2.2.4 Utilization of food grains: (Refer Table 3.7 of the Analysis sheet)

The State utilized 124400.66 MTs (98%) of food grains against the allocation of 126898.90 MTs. The inter district variations ranged from 71% in Jaisalmer to 137% in Udaipur. Such a wide variation indicates issues relating to food grain supply management.

2.2.5 Payment of cost of foodgrains to FCI: (Refer Table 3.9 of the Analysis sheet)

The FCI has submitted bills for Rs. 2582.18 lakh during 2017-18 towards cost of food grains. The State has made payment of Rs. 2582.18 (100%) to FCI.

2.3 COOKING COST (PRIMARY + UPPER PRIMARY)

2.3.1 Level of Opening balance as on 01.04.17: (Refer Table 4.1.1 of the Analysis Sheet)

The State had negative opening balance of Rs. 5748.47 lakh as on 01.04.2017.

2.3.2 Level of closing balance as on 31.03.2018 : (Refer Table 4.1.2 of the Analysis Sheet)

The closing balance of cooking cost was Rs. 4043.98 lakh (8%) of the annual allocation of Rs. 52351.36 lakh. However, some districts had relatively higher closing balance of cooking cost. They are Jaisalmer (38%), Kota (14%), Jhalawar(18%), Tonk (17%), Sirohi & S.Madhopur (15% each).

2.3.3 Utilization of Cooking cost : (Refer Table 4.5 of the Analysis Sheet).

The State has utilized Rs. 51326.37 lakh (98%) against the allocation of 52351.36 lakh during 2017-18.

2.4 Reconciliation of utilization and performance during 2017-18 (01.04.17 to 31.03.2018)

2.4.1 Mismatch in utilization of Food grains vis-à-vis cooking cost: (Refer Table – 5.1 of Analysis Sheet)

Ideally the percentage utilization of cooking costs and food grains should tally with each other. The utilization of cooking cost (98%) and food grains (98%) matches with each other. Thus, there is no mismatch in the utilization of cooking cost and food grains. However, some districts exhibited variations in the utilization of food grain and cooking cost. They are Baran(97% & 127%), Bharatpur (97& 128), Bundi(85% & 104%), Chittorgarh (92% & 106%), Hanumangarh (86% & 109%), Karauli (96-115%) and Partapgarh (83% & 102%).

2.5 Cook-Cum-Helper (PRIMARY + UPPER PRIMARY): (Refer Table – 6.2 of Analysis Sheet).

The State has engaged 109922 cook-cum-helpers (CCH) against PAB approval of 115622. Thus, 5700 CCH have not been engaged by the State. These CCH are to be paid honorarium @ Rs.1000.00 per month per cook-cum-helper for ten months in a year. This honorarium is shared between the Centre and the State in 60:40 ratio. However, States can contribute more from their own resources. The State is making additional contribution of Rs.200 per CCH per month over and above its minimum mandatory contribution of Rs.400 per CCH per month.

The State had negative opening balance of Rs. (-)1.54 lakh on 01.04.2017. An amount of Rs. 14314.16 lakh was released for payment of honorarium to CCH. Thus Rs. 14312.62 lakh were

made available to the State during 2017-18. The expenditure is Rs 14312.76 lakh (95%) against allocation of Rs.15074.64 lakh. The State proposes to engage the remaining 5700 CCH against the already approved 49449 CCH.

2.6 Utilization of MME (Refer Table – 7.2 of Analysis Sheet)

The State had nil opening balance on 01.04.2017. The annual allocation was Rs. 784.21 lakh against which 784.21 lakh were released during 2017-18. The State has utilized Rs. 784.21 lakh (100%) of the allocated funds.

2.7 Utilization of Transportation Assistance (Refer Table – 8.2 of Analysis Sheet)

The State had negative opening balance of Rs. 140.14 lakh as on 01.04.2017. The annual allocation for Transport Assistance during 2017-18 is Rs. 951.74 lakh. The State had lifted 112331.20 MTs of food grain from FCI during 2017-18. Thus, transportation assistance @ 75 per quintal for carrying the food grains to schools is Rs. 842.48 lakh. The State has incurred the expenditure of Rs. 534.58 lakh (56% of annual allocation) on transportation of food grains from FCI godowns to schools.

2.8 Construction of Kitchen-cum-stores (Reference Table -9.1.3 of Analysis Sheet)

The non-recurring central assistance of Rs. 47135.85 lakh was released during 2006-07 to 2009-10 for the construction of 77298 kitchen-cum-stores. The State has utilized Rs. 31295.07 lakh for the construction of 50595 kitchen-cum-stores (65% of the sanctioned kitchen-cum-stores). But there seems to be inconsistency in the data furnished by the State if it is compared with the data furnished during the last three years:

Data furnished in the AWP&B		Kitchen-cum Stores		
Year	Period up to	Constructed	In-Progress	Yet to Start
2015-16	Dec 2014	49949	5521	17729
2016-17	Dec. 2015	57425	2951	10968
2017-18	Dec. 2016	60715	908	6026
2018-19	Mar.2018	50595	4143	4867

The State has changed the data relating to number of kitchen-cum-stores constructed by it. The State may reconcile its data on the number of kitchen-cum-stores constructed by it against the sanctioned 77298 kitchen-cum-stores.

2.9 Procurement of Kitchen devices (Reference Table -9.2.3 of Analysis sheet)

The non-recurring central assistance of Rs. 5969.33 lakh was released during 2006-07 to 2009-10 for the procurement of kitchen devices for 88408 schools @ Rs. 5000/- each school and replacement of kitchen devices in 30979 schools. As per details given below:

New Schools		Replacement of Kitchen devices	
Year	Kitchen devices sanctioned	Year	Kitchen devices sanctioned
2006-07	14464	2012-13	14464
2007-08	8445	2013-14	8445

2009-10	54260	2016-17	8030
2013-14	3175	Total	30939
2014-15	8104		
Total	88448		

The State has utilized the entire non-recurring central assistance for the procurement and replacement of sanctioned kitchen devices. Out of the 54260 kitchen devices sanctioned during 2009-10, kitchen devices for 8030 schools have been replaced. Therefore, the proposal of the State Government for replacement of kitchen devices in 8759 schools may be considered for approval. .

3. Data Entry Status on the MIS Web Portal

3.1 Annual & Monthly Data Entry Status

FY-2017-18**Annual Data Entry Status_RAJASTHAN**

S. No.	District	Total Schools	Completed(Saved)	Pending	% Completed
1	AJMER	1888	1888	0	100%
2	ALWAR	2929	2929	0	100%
3	BANSWARA	2740	2740	0	100%
4	BARAN	1309	1309	0	100%
5	BARMER	5113	5113	0	100%
6	BHARATPUR	1893	1893	0	100%
7	BHILWARA	2920	2920	0	100%
8	BIKANER	1970	1966	4	100%
9	BUNDI	1294	1294	0	100%
10	CHITTAURGARH	1839	1839	0	100%
11	CHURU	1436	1436	0	100%
12	DAUSA	1571	1571	0	100%
13	DHAULPUR	1150	1150	0	100%
14	DUNGARPUR	2179	2179	0	100%
15	GANGANAGAR	1927	1927	0	100%
16	HANUMANGARH	1090	1090	0	100%
17	JAIPUR	3744	3744	0	100%
18	JAISALMER	1262	1262	0	100%
19	JALOR	1901	1901	0	100%
20	JHALAWAR	1803	1803	0	100%
21	JHUNJHUNUN	1617	1617	0	100%
22	JODHPUR	3574	3574	0	100%
23	KARAULI	1387	1386	1	100%
24	KOTA	1146	1146	0	100%
25	NAGAUR	3176	3176	0	100%
26	PALI	1825	1825	0	100%
27	PRATAPGARH	1436	1436	0	100%
28	RAJSAMAND	1687	1687	0	100%
29	SAWAI MADHOPUR	1105	1105	0	100%
30	SIKAR	1962	1962	0	100%
31	SIROHI	931	931	0	100%
32	TONK	1588	1588	0	100%
33	UDAIPUR	3923	3923	0	100%
	Total	67315	67310	5	100%

Source: www.trgmdm.nic.in as on 11 June'18 till 11:52 hrs

3.2. Monthly data Entries during 2017-18

FY 2017-18

Monthly Data Entry Status_RAJASTHAN

S. No.	District	Total Schools	% April	% May	% June	% July	% Aug	% Sept	% Oct	% Nov	% Dec	Jan%	Feb %	Mar %	Average %
1	AJMER	1888	100%	100%	100%	100%	100%	100%	100%	100%	100%	99%	99%	97%	100%
2	ALWAR	2929	100%	100%	100%	100%	100%	100%	100%	100%	100%	100%	91%	82%	98%
3	BANSWARA	2740	100%	100%	100%	100%	100%	100%	100%	100%	100%	100%	93%	89%	98%
4	BARAN	1309	100%	100%	100%	100%	100%	100%	100%	100%	100%	100%	100%	99%	100%
5	BARMER	5113	100%	100%	100%	100%	100%	100%	100%	100%	100%	100%	100%	94%	99%
6	BHARATPUR	1893	100%	100%	100%	100%	100%	100%	100%	100%	100%	82%	78%	56%	93%
7	BHILWARA	2920	100%	100%	100%	100%	100%	100%	100%	100%	100%	99%	99%	97%	99%
8	BIKANER	1970	100%	100%	100%	100%	99%	99%	98%	97%	86%	81%	73%	94%	
9	BUNDI	1294	100%	100%	100%	100%	100%	100%	100%	100%	100%	100%	100%	100%	100%
10	CHITTAURGARH	1839	100%	100%	100%	100%	100%	100%	100%	100%	100%	100%	100%	88%	99%
11	CHURU	1436	100%	100%	100%	100%	100%	100%	93%	82%	82%	63%	43%	40%	83%
12	DAUSA	1571	100%	100%	100%	100%	100%	100%	100%	100%	99%	99%	99%	96%	99%
13	DHAULPUR	1150	100%	100%	99%	99%	99%	99%	99%	99%	98%	98%	97%	84%	98%
14	DUNGARPUR	2179	98%	98%	98%	97%	97%	97%	97%	97%	97%	94%	60%	29%	88%
15	GANGANAGAR	1927	100%	100%	100%	100%	100%	100%	100%	100%	100%	100%	100%	100%	100%
16	HANUMANGARH	1090	100%	100%	100%	100%	100%	100%	100%	100%	100%	100%	97%	80%	98%
17	JAIPUR	3744	100%	100%	100%	100%	100%	100%	100%	100%	100%	100%	100%	100%	100%
18	JAISALMER	1262	100%	100%	100%	100%	100%	100%	100%	100%	100%	100%	97%	95%	99%
19	JALOR	1901	100%	100%	100%	100%	100%	100%	100%	100%	100%	100%	100%	100%	100%
20	JHALAWAR	1803	100%	100%	100%	100%	100%	100%	100%	100%	100%	70%	56%	53%	90%
21	JHUNJHUNUN	1617	100%	100%	100%	100%	100%	100%	100%	100%	100%	91%	91%	91%	98%
22	JODHPUR	3574	100%	100%	100%	100%	100%	100%	100%	100%	100%	100%	100%	100%	100%
23	KARALI	1387	99%	99%	99%	85%	84%	84%	84%	84%	84%	57%	56%	52%	81%
24	KOTA	1146	100%	100%	100%	100%	100%	100%	100%	100%	100%	100%	100%	100%	100%
25	NAGAU	3176	100%	100%	100%	100%	100%	100%	100%	100%	100%	99%	98%	94%	99%
26	PALI	1825	98%	98%	98%	98%	98%	98%	98%	98%	98%	97%	96%	92%	97%
27	PRATAPGARH	1436	100%	100%	100%	100%	100%	100%	100%	100%	100%	96%	81%	59%	95%
28	RAJSAMAND	1687	100%	100%	100%	100%	100%	100%	100%	100%	100%	100%	100%	100%	100%
29	MADHOPUR	1105	100%	100%	100%	100%	100%	100%	100%	100%	100%	100%	100%	99%	100%
30	SIKAR	1962	100%	100%	100%	100%	100%	100%	100%	100%	100%	100%	100%	100%	100%
31	SIROHI	931	100%	100%	100%	100%	100%	100%	100%	100%	100%	100%	100%	100%	100%
32	TONK	1588	100%	100%	100%	100%	100%	100%	100%	100%	100%	100%	100%	100%	100%
33	UDAIPUR	3923	100%	100%	100%	100%	100%	100%	100%	100%	100%	99%	81%	79%	97%
	Total	67315	100%	100%	100%	99%	99%	99%	99%	99%	99%	96%	91%	86%	97%

Source: www.trgmdm.nic.in

as on 11 June'18 till 13:32 hrs

3.3. AUTOMATED MONITORING SYSTEM

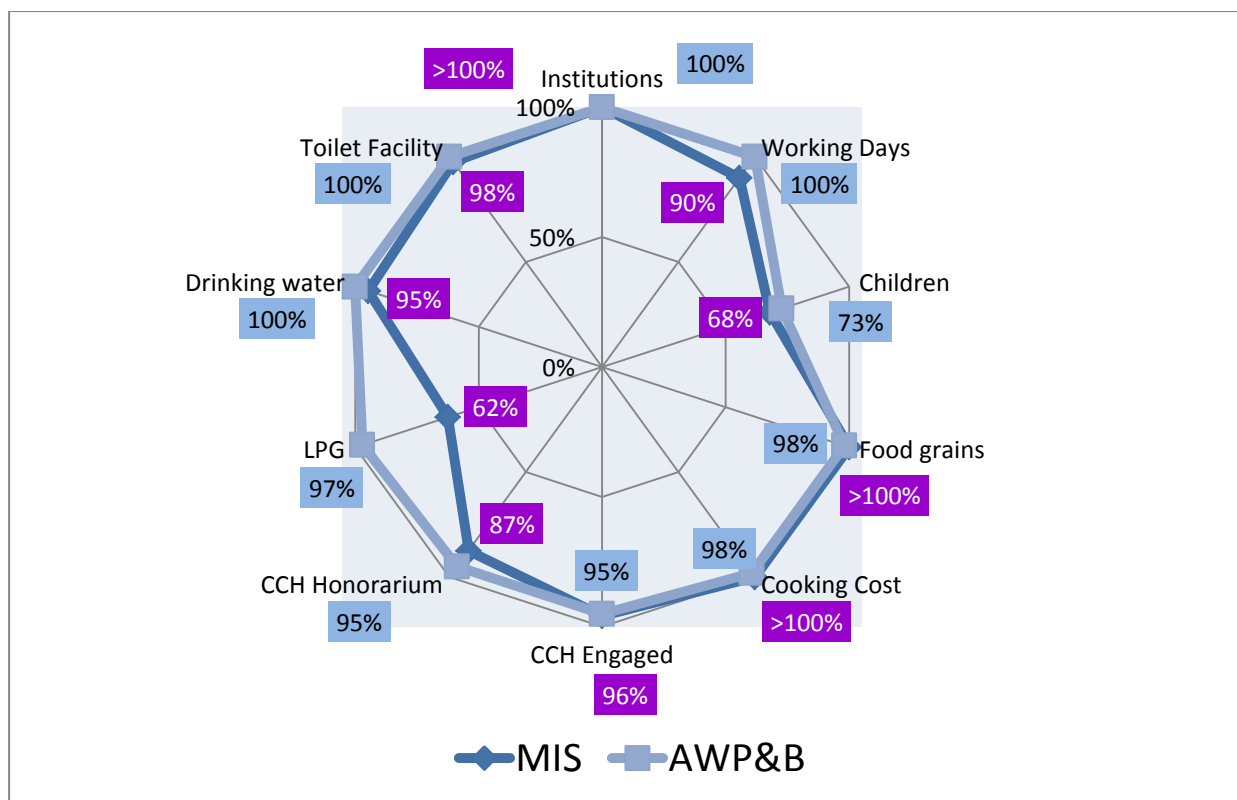
Dictrict wise Meals Served on : 9 June'2018 Rajasthan								
S.No.	District	Total Schools	Reported Schools	% Reported Schools	Total Enrolment	Reported Schools Enrolment	Meals Served	Meals Served Percentage
1	AJMER	1934	41	2%	219672	5289	61	1.15%
2	ALWAR	2923	80	3%	289270	9406	130	1.38%
3	BANSWARA	2691	8	0%	269140	842	74	8.79%
4	BARAN	1335	61	5%	117579	4831	216	4.47%
5	BARMER	4947	1095	22%	398597	90442	23905	26.43%
6	BHARATPUR	1776	28	2%	193076	2504	266	10.62%
7	BHILWARA	2888	523	18%	255825	47554	15905	33.45%
8	BIKANER	2014	86	4%	188441	10280	2951	28.71%
9	BUNDI	1310	9	1%	105841	452	36	7.96%
10	CHITTAURGARH	1848	56	3%	148347	5515	45	0.82%
11	CHURU	1472	180	12%	167940	20119	3201	15.91%
12	DAUSA	1555	71	5%	137697	5481	103	1.88%
13	DHAULPUR	1165	6	1%	144958	588	140	23.81%
14	DUNGARPUR	2250	83	4%	213855	7899	2248	28.46%
15	GANGANAGAR	1965	19	1%	144593	1013	212	20.93%
16	HANUMANGARH	1089	68	6%	123134	6873	1140	16.59%
17	JAIPUR	3764	368	10%	312532	26270	5869	22.34%
18	JAISALMER	1305	252	19%	92435	22399	9054	40.42%
19	JALOR	1923	25	1%	206127	2599	20	0.77%
20	JHALAWAR	1747	19	1%	154421	1763	224	12.71%
21	JHUNJHUNUN	1599	163	10%	104540	12444	2106	16.92%
22	JODHPUR	3569	575	16%	291487	45380	4372	9.63%
23	KARALI	1456	37	3%	127275	3644	40	1.10%
24	KOTA	1163	17	1%	106107	1652	34	2.06%
25	NAGAU	3110	289	9%	272569	28758	2078	7.23%
26	PALI	1807	35	2%	185958	3591	119	3.31%
27	PRATAPGARH (RAJ.)	1361	29	2%	126164	2219	31	1.40%
28	RAJSAMAND	1731	31	2%	146345	2653	10	0.38%
29	SAWAI MADHOPUR	1070	247	23%	99615	24415	9694	39.71%
30	SIKAR	1980	63	3%	163412	5233	38	0.73%
31	SIROHI	930	32	3%	107431	4486	15	0.33%
32	TONK	1602	50	3%	117485	4255	40	0.94%
33	UDAIPUR	3952	53	1%	368396	6423	133	2.07%
	Total	67231	4699	7%	6100264	417272	84510	20.25%

Mismatch in Data from MIS and AWP&B :-

COMPONENT	MIS	AWP&B
Institutions	67315	66506
Working Days	209	232
Children	4225483	4524585
Food grains (In MT)	1399758	124401
Cooking Cost (Rs. in Lacs)	94966	51326
CCH Engaged	110825	109922
CCH Honorarium (Rs. in Lacs)	13184	14313
LPG	41565	64497
Drinking water	62949	66506

Toilet Facility	64884	66506
------------------------	-------	-------

The graphical representation of the differences in data from MDM-MIS and as submitted by the State through Annual Work Plan & Budget is given below:



4. Fund Flow

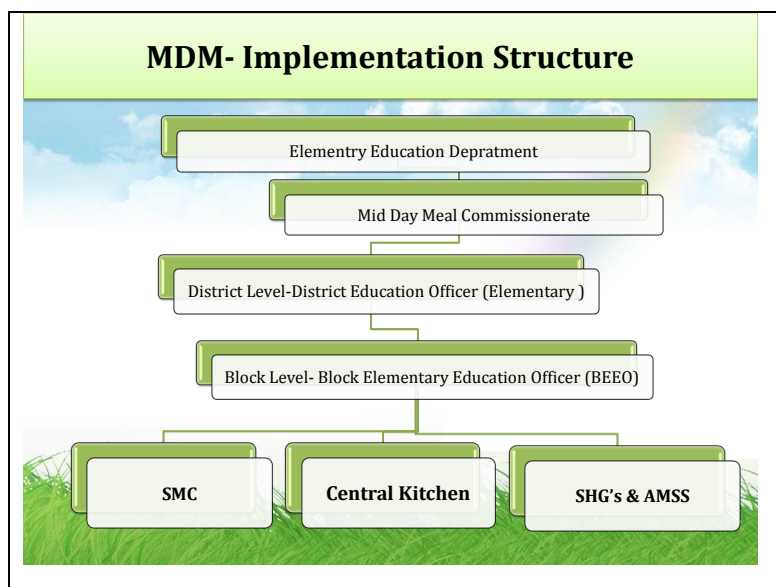
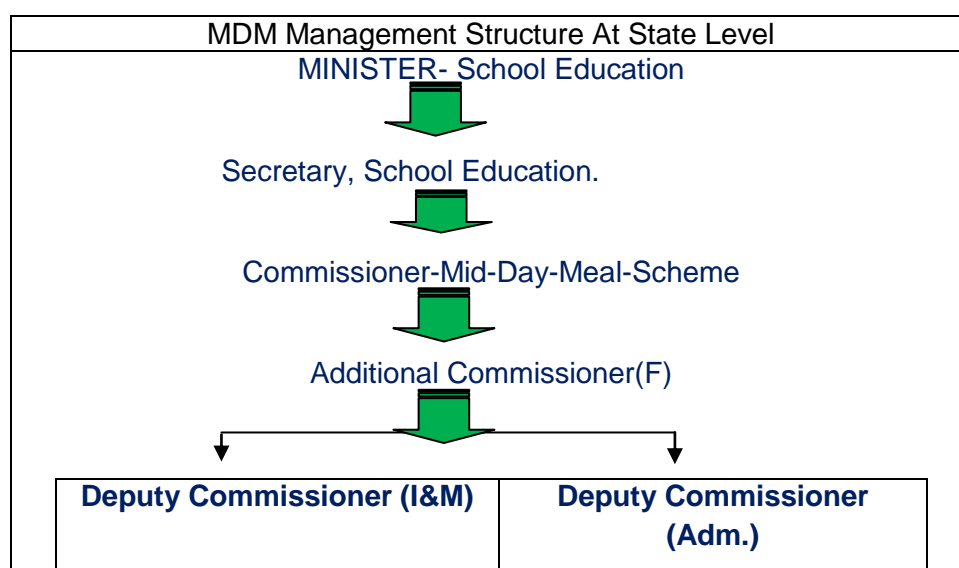
Funds relating to mid-day-meal are being transferred from head office to respective District Education Officer's bank accounts through RTGS and further the funds are transferred to school level through District Authorities.

Type of Instalment	Date of receipt by				
	State	Directorate	District	Block	School
Ad-hoc	29.04.18	16.05.17	28.05.17	-	02.06.17
Balance of 1 st instalment	17.07.18		17.08.17	-	22.08.17
2 nd Instalment	29.12.18	12.01.18	25.01.18	-	29.01.18

The State released the central assistance to the implementing agencies after a delay of one month from the date of their receipt from MHRD,

5. Management Structure

Management and implementation of the mid-day-meal-scheme (MDMS) in the state of Rajasthan has two strata. The upper strata is at the state level that involves the ministry of School Education and the Commissionerate of mid-day-meal-scheme (MDMS). The lower strata includes the district administration along with District Education Officer (DEO)Elementary, block level at Block Elementary Education Officer(BEEO). The preparation and serving of the mid-day-meal (MDM) to the students is ensured by three cooking agencies namely the school management committees (SMCs), NGO's, the women based self –help-groups (SHGs) and Annapurna Mahila Sahkari Samities (AMSS).



Process of Plan Formulation at State and District Level

The AWP&B for the year 2018-19 has been prepared subsequent to the compilation of all the district level AWP&Bs for the same year. This being a new initiative of the GOI for adopting the bottom-up approach in planning has been concluded with. Passing through stages of plan

formulation of the AWP&B which included data synchronization, discrepancies in data, and other such issues the plan has been prepared with much hard work and inclusiveness.

6. Capacity Building

Master trainers nearly 1100 were trained through ToTs with the help of Institute of Health Management Research (IIHMR), Institute of Hotel Management (IHM), Food Craft Institute (FCI) and Akshaya Patra Foundation. To train all Cook cum Helpers, training programme were organized at block and nodal school level.

7. Grievance Redressal Mechanism

The following "Grievance Redressal System" has been established in Rajasthan :-

i) Complaints published in newspaper or aired through Electronic Media

Copies of complaint are sent to the concerned DEO, Elementary Education of the district who is the district nodal officer for MDM and reply sought immediately.

ii) Complaints Received Through Chief Minister's Office and/or other Offices :

The Secretary to the Government for this department reviews the matter and ensures compliance of such grievances.

iii) Complaints by an individual in person or by Post:-

Complaints received from an individual are taken up on same day. A copy of the enquiry/factual report sent to him.

iv) Addressing Shortcomings:

Monthly inspections in schools are regularly performed by District Level Officers (DLOs) & Block Level Officers (BLOs) and by other officers during their visits within the district. Prescribed formats for inspections are used for these purposes. Inspection reports are routed up to the MDM directorate and if any shortcomings are spotted out during any inspection, concerned authority always takes up action immediately. Apart from this, sudden inspections are also carried out in all districts and disciplinary actions have been taken immediately by the districts.

v) Addressing RTI Issues :

Mid Day Meal Commissioner is the State Information Officer. Similarly, DEO, Elementary Education and Block Level Elementary Education Officer are nodal officers at District and Block levels. At School level, Head Master provides relevant information.

8. Testing of Meal by accredited labs

Food Safety Department expressed the inability for collecting and testing the MDM food samples due to lack of staff and unavailability of facilities in Departmental District Laboratories. Therefore, some samples were collected and tested by NABL Accredited laboratories situated in Jaipur. The collecting and testing of MDM samples from other districts out of Jaipur is expensive and also the possibility of getting the incorrect results due to the contamination of food. Even though nutritive values were estimated in some samples out of Jaipur also.

The State has written to Commissioner Food Security, Rajasthan Jaipur to take appropriate action for food testing in the State.

The testing of meals is being done two times in a month where the MDM is being prepared by Centralized Kitchens. In the current financial year total 74 food samples were collected for testing. Out of these 74 samples, 56 Samples of cooked food were found as per norms. The concerned NGO/ schools have been directed to adhere the guidelines of Gol in respect of nutritive values in MDM.

9. **Community participation:**

i) **Tasting of meal**

Teacher and SMC members taste the food before it is served to the children. A taste register is maintained at school level in the schools. Instructions have been issued to maintain the roster of parents, community for the presence of at least two parents in the school on each day at the time of serving and tasting of mid day meal. It is being followed by the SMC members in the schools.

ii) **Community participation through Tithi Bhojan**

The state government has initiated the concept of public participation in the scheme through 'Utsav Bhoj Yojna' under the concept of 'Tithi Bhojan Yojna'. In this scheme, the villagers can provide food and sweets to children on various occasions and utensils for MDM centers.

iii) **Monitoring by Community:**

Directions have been issued for community monitoring at school level i.e. Mother Roster, Inspection register also it is being followed in schools.MDM has been tasted by community members also

10. **Social Audit** : Baran and Dungarpur were selected for Social Audit on pilot basis in the financial year 2015-16 by the State Government. The social audit in both the districts has been completed and the reports have already been sent to Gol.

11. **Monitoring & Supervision**

To monitor the MDMS, SMS based automated monitoring system has been launched in the state since August 2016. For this purpose portal developed by Himachal Pradesh is being used. The district level officers, MDM incharge, teachers and computer operators were trained through training programmes organized at block, district and state level about the handling of the portal and monitor the scheme. At present 66506 Govt. Primary and Upper Primary Schools are being benefited through Mid Day Meal Scheme in the State of Rajasthan. Till date, data of 66506 schools have been ported on the portal and information of beneficiary students of around 55,000 Schools is being received on daily basis by SMS on toll free no 15544. The information under SMS based AMS is got validated and this data is being used for monitoring purpose. Necessary action has been taken by the state on the basis of information received on the portal about not serving of MDM for the various reasons.

12. **Rashtriya Bal Swasthya Karyakaram:**

The school health program (SHP) is primarily the responsibility of the Medical & Health Department of the State Government in convergence with the elementary education department involving the national-rural-health-mission (NRHM) and sarva-shiksha-abhiyan (SSA). All these executing and implementing departments and agencies carry out periodical health and medical checkup of the school students.

General as well as specific health and medical support is provided to the school students who are spotted deficient with micronutrients such as vitamin-A, iron-folic-acid (IFA), multi-vitamin-supplementation, deworming tablets etc. Every deficient student is provided micro-nutrients and other medical-aid for at least 100 days in a year.

A brief statement of health-check-ups performed under school health program (SHP) during past five year (05) is given below:

School Health Program Status				
Year	Schools Covered	Students Examined	WIFS administered	Students Referred
2012-13	72310	5574849	4050175	22175
2013-14	70512	5620283	4457332	20352
2015-16	68652	5681243	5189011	19175
2016-17	68685	5751648	5003261	11506
2017-18	66506	5291728	4838650	9156

13. Kitchen Gardens:

Setting up of Kitchen gardens in 22183 schools is possible. However, kitchen gardens have been set up in 2056 schools only. The work is in progress in 4367 schools for the kitchen gardens. The State proposes to set up kitchen gardens in 18631 schools during 2018-19.

14. Aadhar enrolment:

4662022 (75%) of the enrolled children have aadhar card. The registration of 564042 (9%) school children is in progress but 996549 (16%) school children are yet to be registered under Aadhar. The State may draw an action plan for ensuring the registration of all the school children under Aadhar.

15. NGOs:

There are Seven (07) centralized kitchens managed by 4 NGOs viz. Akshaya Patra Foundation, QRG Foundation, Annamrit Foundation and Adamyia Chetna Trust in the urban area schools in five districts namely Ajmer, Alwar, Jaipur, Jodhpur and Raajsamand.:

CENTRALIZED KITCHENS FUNCTIONING in RAJASTHAN				
SN	DISTRICT	ORGANIZATION	Schools Covered	Children Covered
1	Ajmer	Akshaya Patra Foundation	108	16540
2	Alwar	QRG Foundation	402	55702
3	Jaipur	Akshaya Patra Foundation	1200	127959
		Annamrit Foundation	829	49929
4	Jodhpur	Adamyia Chetna Trust	261	33720
		Akshaya Patra Foundation	140	13131

5	Rajsamand	Akshaya Patra Foundation	587	50020
TOTAL (07)			3527	347001

Maximum distance of schools from the Centralized Kitchen is 25-45 Kms. Sealed containers are used for supply of meals to schools. Tentative time of delivery of meals at schools from centralized kitchen is 1-2 hrs. The MDM prepared at centralized kitchens has been tested at centralized kitchens and school level both. All PRIs have also been formally requested to inspect the functioning of these centralized kitchens. NGOs are not receiving grant from other organizations for the mid day meal.

Part C : Recommendations of the Appraisal Team

S. No.	Component	PAB Approval 2017-18	Proposal for 2018-19	Recommendations of Appraisal Team
1	Institutions			
1.1	Primary	34035	32282	32282
1.2	Upper Primary	34650	34224	34224
1.3	NCLP	0	0	0
2	Children			
2.1	Primary	2857473	3197095	2945860
2.2	Upper Primary	1604618	1779952	1651684
2.3	NCLP	0	0	0
3	Working Days			
3.1	Primary	232	232	232
3.2	Upper Primary	232	232	232
3.3	NCLP	0	0	0
4	Cook cum Helper			
4.1	Primary	115622	109922	109922
4.2	Upper Primary			
5	Drought			
5.1	Children (Pry)	753647	520800	520800
5.2	Children (U Pry)	379941	260400	260400
5.3	Working days	36	40	40
5.4	Cook-cum-helpers	50000	6180	6180
6	Non Recurring			
6.1	Kitchen cum Store	0	4867	0
6.2	Kitchen Devices(New)	0	0	0
6.3	Kitchen Devices (Replacement)	0	8759	8759
7	Central Assistance (Rs. in Crs)			
7.1	Regular	416.51 Cr	452.62 Cr	423.47 Cr
7.2	Drought	19.60	11.08	11.08 Cr
7.3	Non-recurring			
i	Kitchen –cum-stores	0	233.62	0
ii	Kitchen devices(Rep)	0	4.38	4.38
7.3	Total	436.11 Cr	481.38	438.93 Cr.

Appendix-I

RAJASTHAN

QUANTIFICATION OF CENTRAL ASSISTANCE

A. Food grains

Sl. No.	Stage	No. of Children	Working days	Quantity in MTs.		
				Rice	Wheat	Total
Regular						
1	Primary (@ 100 gms per child per school day)	2945860	232	20503.19	47840.77	68343.96
2	U. Primary (@150 gms per child per school day)	1651684	232	17243.58	40235.02	57478.60
3	NCLP (@150 gms per child per	0	0	0	0	0

	school day)					
	Total	4597544		37746.77	88075.79	125822.56
Drought						
4	Primary (@ 100 gms per child per school day)	520800	40	624.96	1458.24	2083.20
5	U. Primary (@150 gms per child per school day)	260400	40	468.72	1093.68	1562.40
TOTAL		781200		1093.68	2551.92	3645.6

B. Cost of Foodgrains, Cooking cost, Transport Assistance, Hon. to cook-cum-helpers and Management Monitoring and Evaluation (MME)

Sl. No.	Component	Amount admissible (Rs. in lakh)
1	2	3
Primary		
1	Cost of Food grains for rice @ Rs.3000 per MT and for Wheat @ Rs. 2000/	1571.91
2	Unit Cooking Cost- Rs. 4.13 per child per day	
2.1	Central Share @ Rs. 2.48 per child per day	16949.30
2.2	Minimum Mandatory State Share @ 1.65 per child per day	11276.75
3	Transportation Cost @ Rs. 750.00 Per MT food grain	512.58
4	Honorarium for cook cum Helper	
4.1	Central Share - (Rs 600 x 10 months)	6595.32
4.2	State Share - (Rs. 400 x 10 months)	4396.88
5	Management Monitoring and Evaluation (MME) @ 1.8% of i) Cost of food grains ii) Cooking cost iii) Cost of transportation and iv) Honorarium to cook – cum-helpers	461.32
Total Central Share		26090.43
Upper Primary		
6	Cost of Food grains for Rice @ Rs. 3000/- per MT for Wheat @ Rs.2000/- per MT	1322.01
7	Unit Cooking Cost- Rs. 6.18 per child per day	
7.1	Central share @ Rs.3.71 per child per day	14216.37
7.2	Minimum Mandatory State Share @ Rs.2. 47 per child per day	9464.81
8	Transportation cost @ Rs. 750.00 Per MT food grains	431.09
9	Honorarium for cook cum Helper	
9.1	Central Share - (Rs 600 x 10 months)	(included in primary)
9.2	Minimum Mandatory State Share- (Rs. 400 x 10 months)	
10	Management Monitoring and Evaluation (MME) @ 1.8% of 1) Cost of food grains 2) Cooking cost	287.45

	3) Cost of transportation and 4) Honorarium to cook – cum-helpers	
Total Central Share		16256.92
Grand total Central Share (Primary + Upper Primary)		42347.35

C. Drought

Sl. No.	Component	Amount admissible (Rs. in lakh)
1	2	3
Primary		
1	Cost of Food grains for rice @ Rs.3000 per MT and for Wheat @ Rs. 2000/	47.91
2	Unit Cooking Cost- Rs. 4.13 per child per day	
2.1	Central Share @ Rs. 2.48 per child per day	516.63
2.2	Minimum Mandatory State Share @ 1.65 per child per day	343.73
3	Transportation Cost @ Rs. 750.00 Per MT food grain	15.62
4	Honorarium for cook cum Helper	
4.1	Central Share - (Rs 600 x 10 months)	74.16
4.2	State Share - (Rs. 400 x 10 months)	49.44
5	Management Monitoring and Evaluation (MME) @ 1.8% of v) Cost of food grains vi) Cooking cost vii) Cost of transportation and viii) Honorarium to cook – cum-helpers	11.78
Total Central Share		666.11
Upper Primary		
6	Cost of Food grains for Rice @ Rs. 3000/- per MT for Wheat @ Rs.2000/- per MT	35.94
7	Unit Cooking Cost- Rs. 6.18 per child per day	
7.1	Central share @ Rs.3.71 per child per day	386.43
7.2	Minimum Mandatory State Share @ Rs.2. 47 per child per day	257.28
8	Transportation cost @ Rs. 750.00 Per MT food grains	11.72
9	Honorarium for cook cum Helper	
9.1	Central Share - (Rs 600 x 10 months)	(included in primary)
9.2	Minimum Mandatory State Share- (Rs. 400 x 10 months)	
10	Management Monitoring and Evaluation (MME) @ 1.8% of 5) Cost of food grains 6) Cooking cost 7) Cost of transportation and 8) Honorarium to cook – cum-helpers	7.81
TOTAL Central Share		441.90
Grand total Central Share (Primary + Upper Primary)		1108.01

E. Non-recurring

:

Item		Central Share	State Share
Kitchen-cum-store		0	0
Kitchen Devices	New	0	0
	Replacement	437.95	0

F. Total Requirement of Funds for 2018-19

(Rs. in lakh)

Component		Centre Share	Minimum Mandatory State share
Recurring	Normal	42347.35	25138.44
	Drought	1108.01	650.44
Non- recurring		437.95	0
Total		43893.31	25788.88

--oOo--